

EZshine Floor Maintenance and Polishing Case

☆☆☆ (Confidential Internal Document)

Content

Part 1 For Concrete/ Terrazzo/Tile Floor

Case Study

1. Concrete Deep Cleaning and Polishing

6-7

How to make it (Solution Introduction)

2. Tile Floor Heavy-duty Restoration

9-10

How to make it (Solution Introduction)

3. Concrete/Terrazzo Floor Daily Maintenance

12

How to make it (Solution Introduction)

How to choose your right EZshine Diamond Pad?

14

4. Tile Floor Deep Cleaning

15

How to make it (Solution Introduction)

Content

Part 2 For Stone Floor Marble/GraniteQuartz

Case Study

1. Marble Floor Restoration & Polishing

18-24

How to make it (Solution Introduction)

2. Marble Floor Maintenance & Polishing

27

How to make it (Solution Introduction)

How to choose your right EZshine Diamond Pad?

29

3. Granite Floor Daily Cleaning

30-32

How to make it (Solution Introduction)

Content

Part 3 **For Resilient Floor** **PVC/Linoleum/Rubber**

Case Study

1 & 2 PVC Floor Stripping

35-39

How to make it (Solution Introduction)

3. Epoxy Resin floor deep cleaning and maintenance

41-42

How to make it (Solution Introduction)

4. PVC Floor Deep Cleaning

44-45

How to make it (Solution Introduction)

How to choose your right pad

47

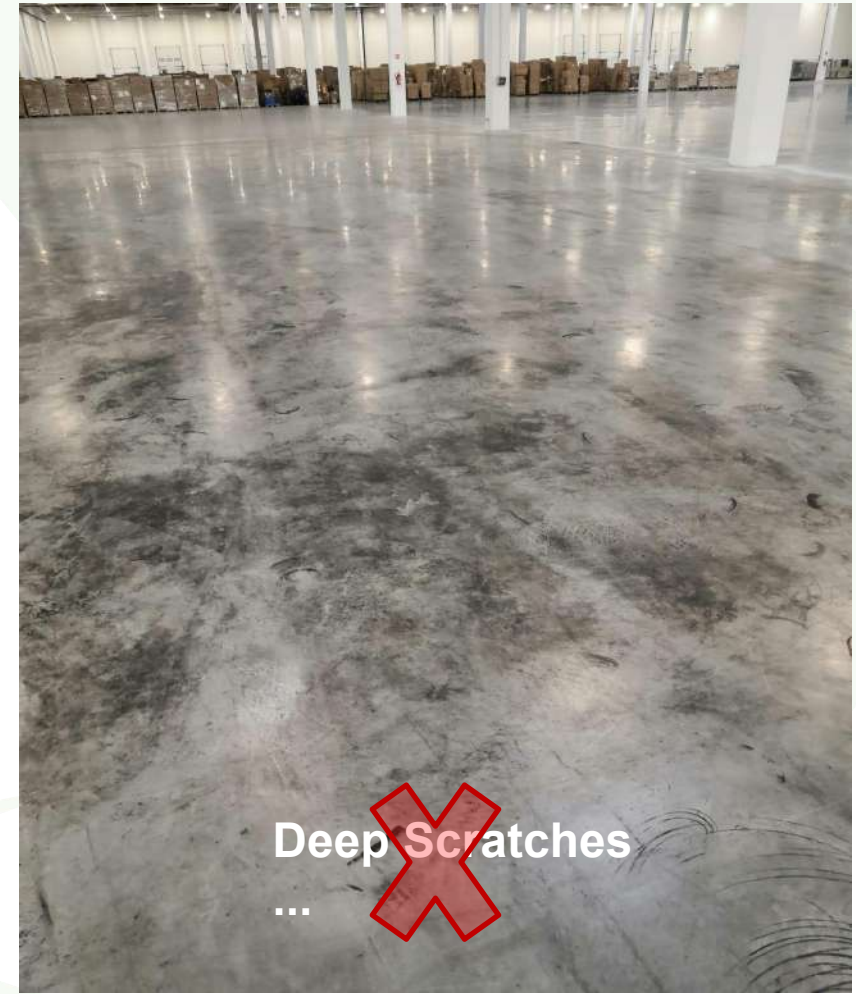
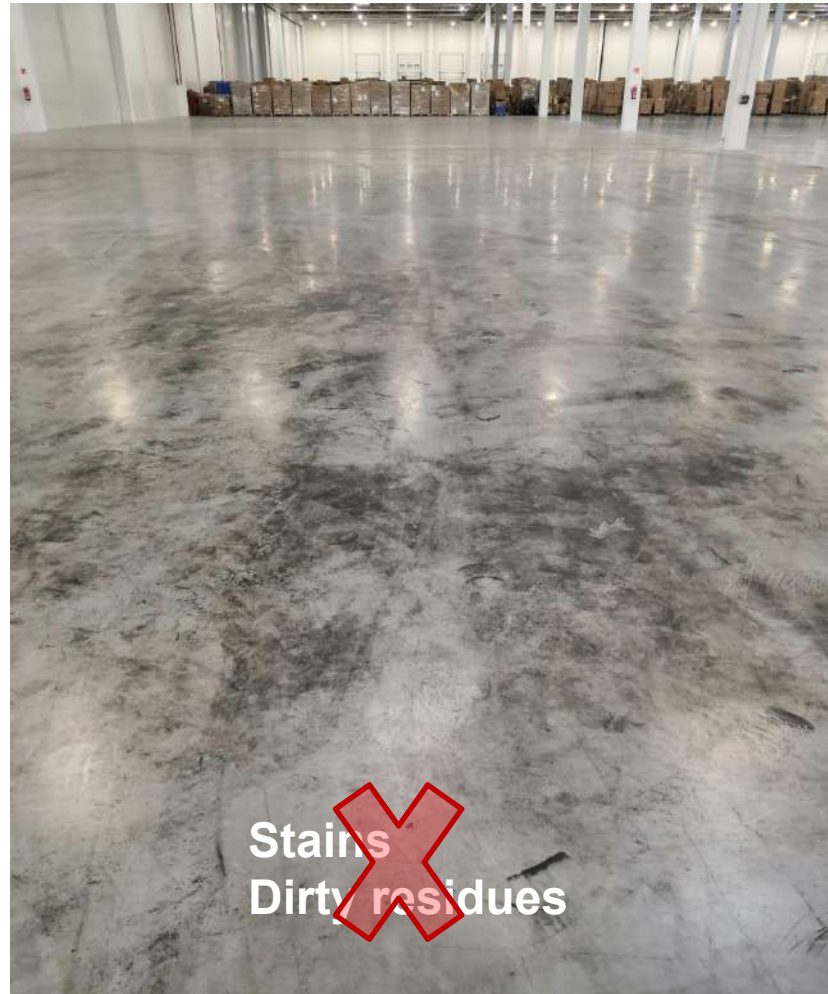
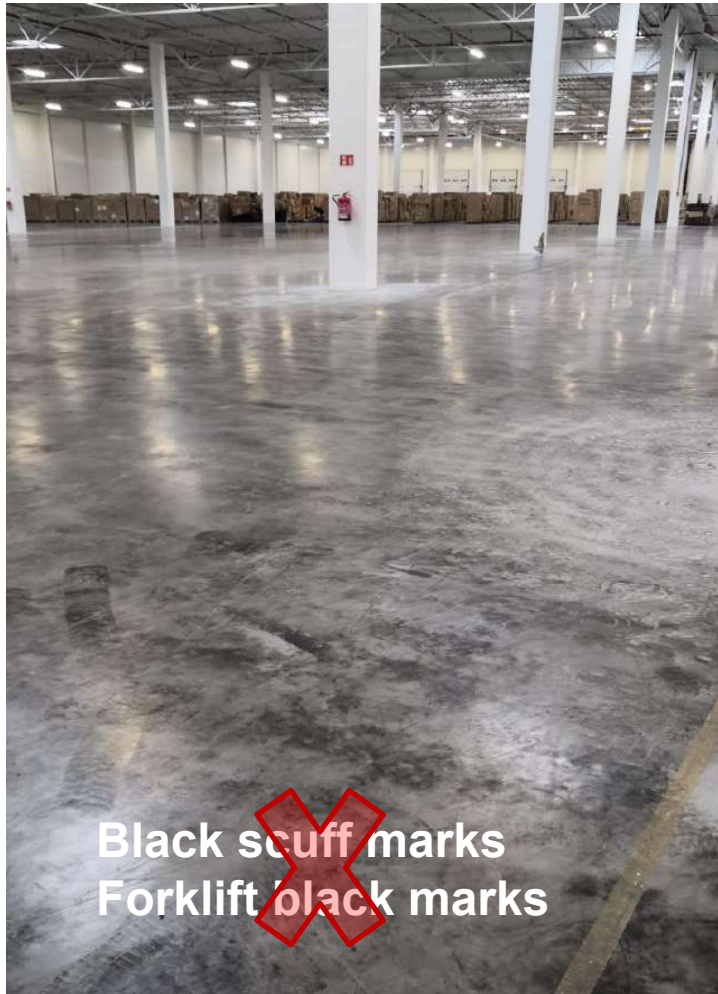
How to choose your right machine

48

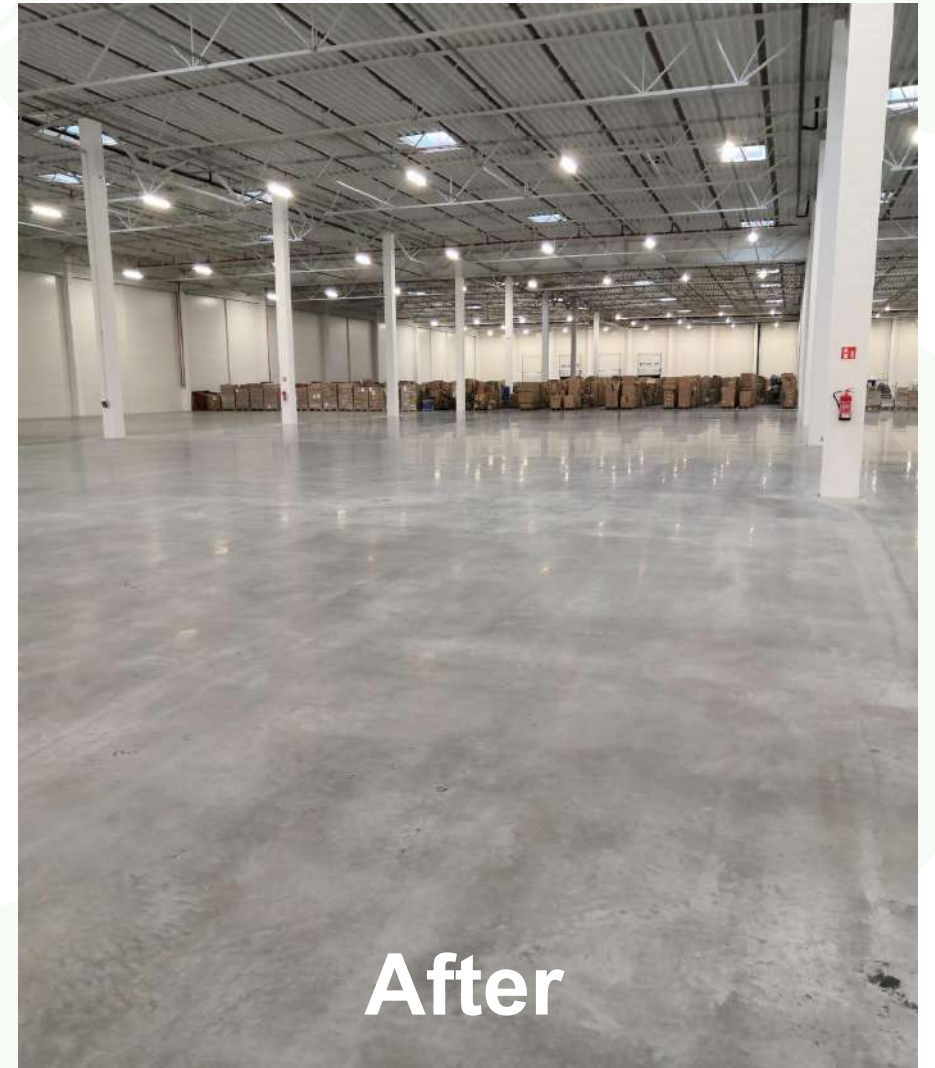
Part 1 For Concrete/Terrazzo/Tile Floor

Case Study

1. Concrete Deep Cleaning and Polishing



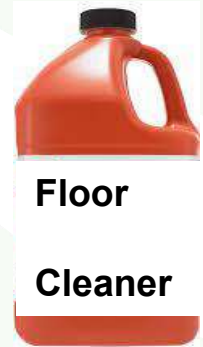
Restoration Result



How to make this result



or



Floor
Cleaner

Tricon Diamond Pad (Grinding)

Floor Scrubber and Single disc machine

Water or Cleaner

If floor dirt contains chemical stuffings,
use cleaner if no chemical materials,
use water only

- Step 1 Tricon 1#
- Step 2 Tricon 2#
- Step 3 Tricon 3#

Step 4 Yellow Pad (Polishing)

**Remarks: If floor is seriously damaged, you can start with Lippage Killer Pad then follow with Tricon Diamond Pad (Resin-bond).
If floor is just stains or black suff marks, tyre marks, you can start to use Tricon Diamond Pad only.**

Case Study

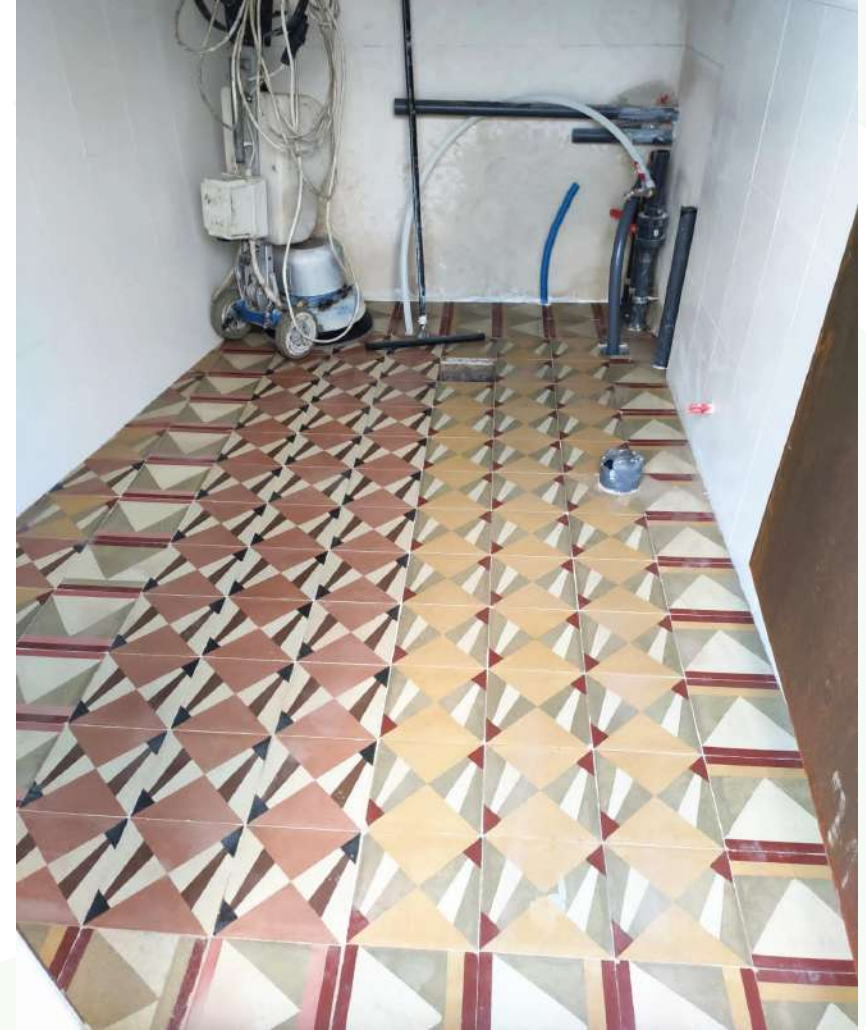
2. Tile Floor Heavy-duty Restoration



Restoration Result

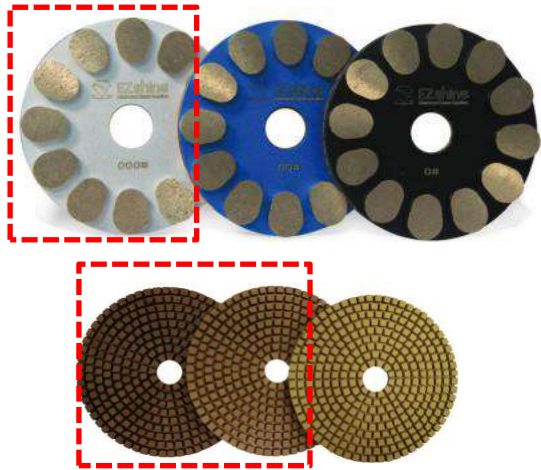


Before



After

How to make this result



or



Lippage Killer Pad (Metal-bond)

- Step 1 Lippage Killer Silver - 000#**
- Step 2 Tricon 1#**
- Step 3 Tricon 2#**
- 6 pcs = one set**

Single Disc Machine

Water or Cleaner

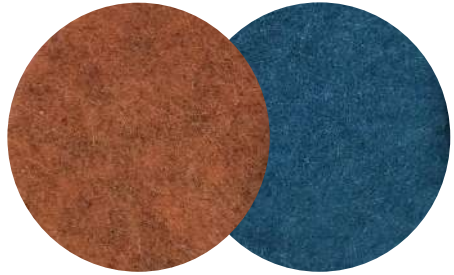
**If floor dirt contains chemical stuffings,
use cleaner if no chemical materials,
use water only**

Case Study

3. Concrete/Terrazzo Floor Daily Maintenance



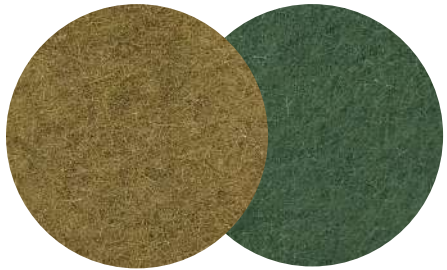
How to make this result



Orange Pad - Medium Step
Blue Pad - Fine Step

High-performance Series

OR



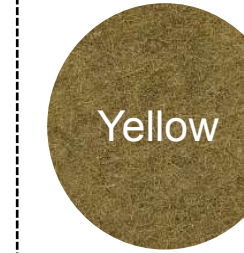



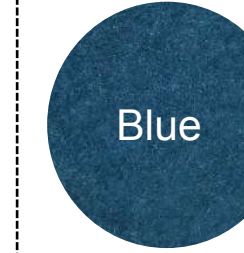


Yellow Pad - Fine Step
Green Pad - XFine Step

Standard-performance Series



How to choose your right EZshine Polycrystal Pad?

| | | | | |
|--|--|--|---|---|
| |  Red |  White |  Yellow |  Green |
|  Extreme Red |  XRed |  Orange |  Blue |  Pink |
| XCoarse 0 | Coarse 1 | Medium 2 | Fine 3 | XFine 4 |
| Stripping Heavy-duty Cleaning | Deep Cleaning | Scrubbing | Polishing Maintenance | Daily Cleaning Polishing High-speed burnishing |

Maintenance Pad
Red-White-Yellow-Green
Standard-performance Series

EZstrip Pad - Extreme Red



Xshine Pad
XRed-Orange-Blue-Pink
High-performance Series



Case Study

4. Tile Floor Deep Cleaning



How to make this result



EZstrip Pad

Extreme Red

XCoarse Step

Orbital/Oscillating Machine
or Single disc machine

Part 2 For Stone Floor Marble-Granite-Travertine-Quartz

Case Study

1. Marble Floor Restoration and Polishing



Before



After



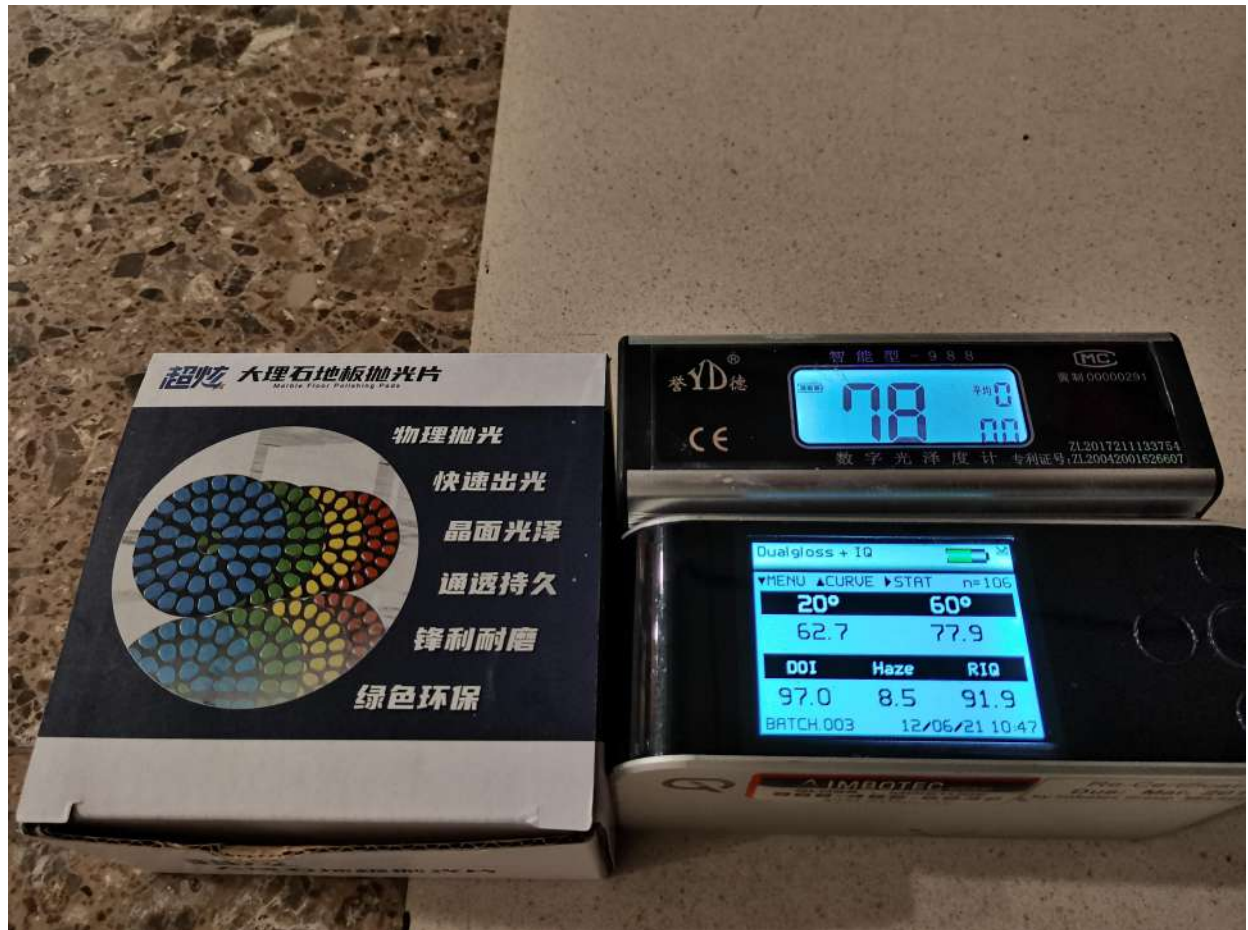


60° = Gloss meter: 100
DOI = Clarity: 91.3



60° = Gloss meter: 104.5
DOI = Clarity: 97.7

For Artificial Stone Floor with Much Resin



Gloss 77.9, Clarity: 97
Beige Stone



Gloss 55.6, Clarity: 91.8
White Stone





For Terrazzo Floor (from video case)

Before

After

After

After

After

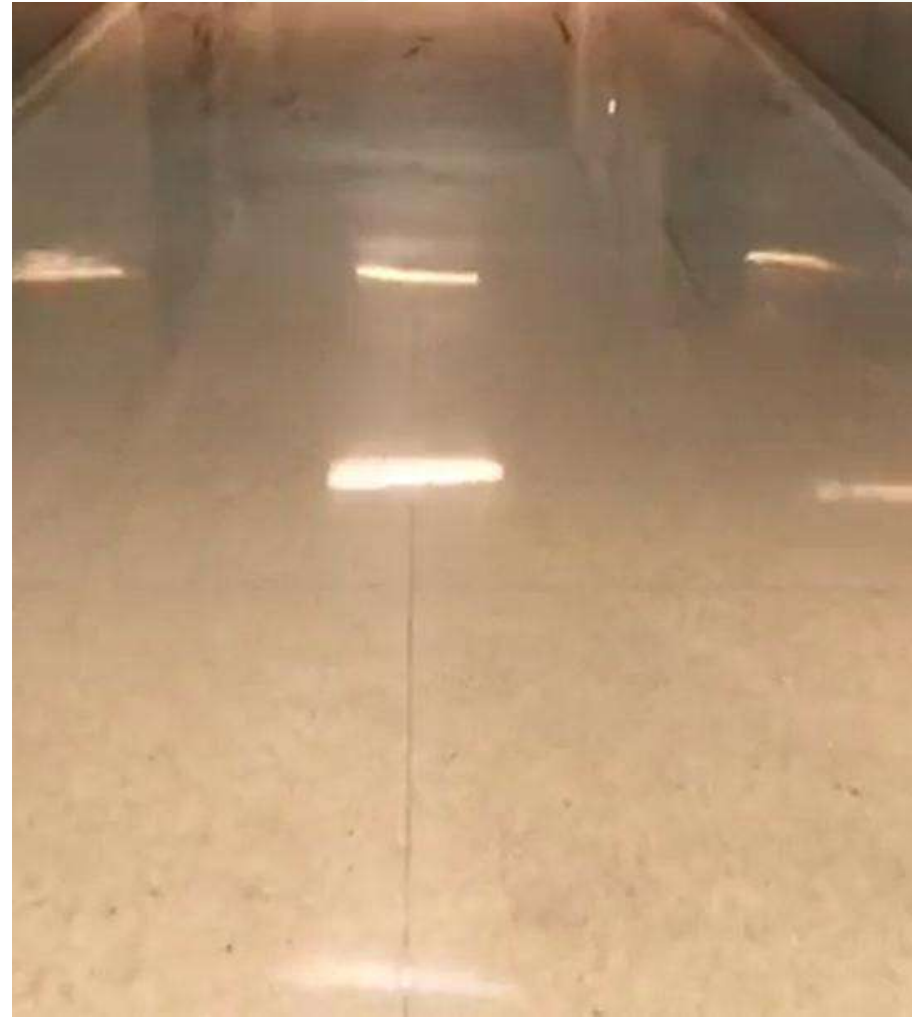
Before



For Terrazzo Floor (from video case)



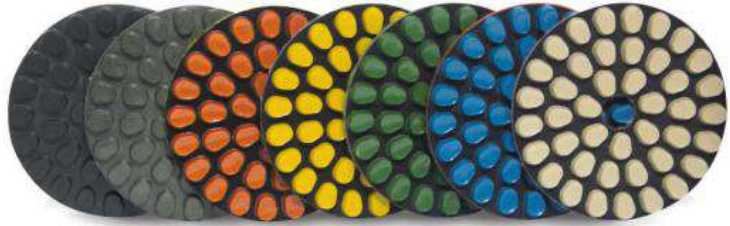
After Mshine Marble Pad 5#



After Mshine Marble Pad 6#

How to make this result

Solution 1



Mshine Marble Pad (Resin-Bond)

1#

2#

200# (Optional, can skip)

400#

800#

1500#

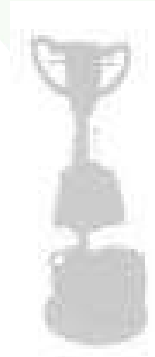
3000#

**Floor grinder or
Single disc machine**

Orbital and scrubber are not recommended

Water only

Solution 2



Angel Diamond Pad (Hybrid)

000# (50#, Optional, only for deep scratches)

00# (100#, Optional, only for deep scratches)

0# (200#)

1# (400#)

2# (800#)

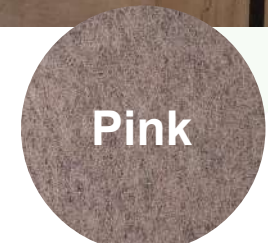
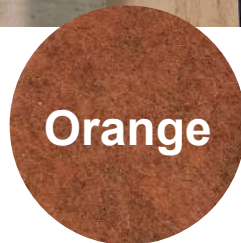
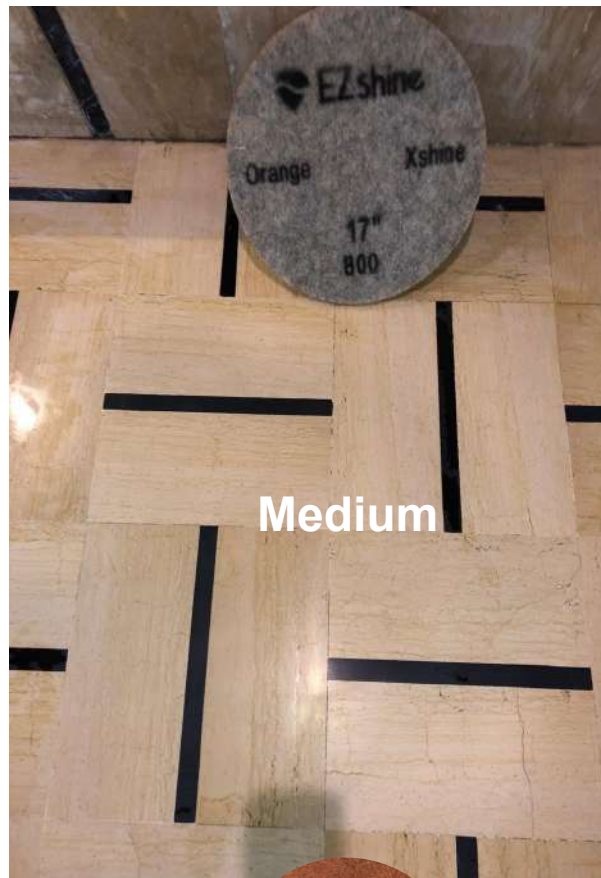
3# (1500#)

4# (3000#)

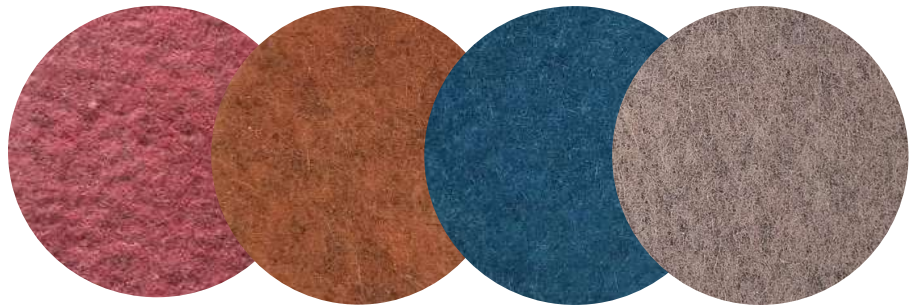
5# (5000#, available for daily cleaning on stone, terrazzo and concrete. **When it's used for daily cleaning, scrubber machine is available. 1 pass for daily cleaning**)

Case Study

2. Marble Floor Maintenance and Polishing



How to make this result



**Xshine Pad
(XRed-Orange-Blue-Pink)**



Water only

How to choose your right EZshine Polycrystal Pad?

| | | | |
|--|---|---|---|
|  Red |  White |  Yellow |  Green |
|  XRed |  Orange |  Blue |  Pink |
| Coarse 1 Deep Cleaning | Medium 2 Scrubbing | Fine 3 Polishing Maintenance | XFine 4 Daily Cleaning Polishing High-speed burnishing |

Maintenance Pad
Red-White-Yellow-Green
Standard-performance Series

Xshine Pad
XRed-Orange-Blue-Pink
High-performance Series

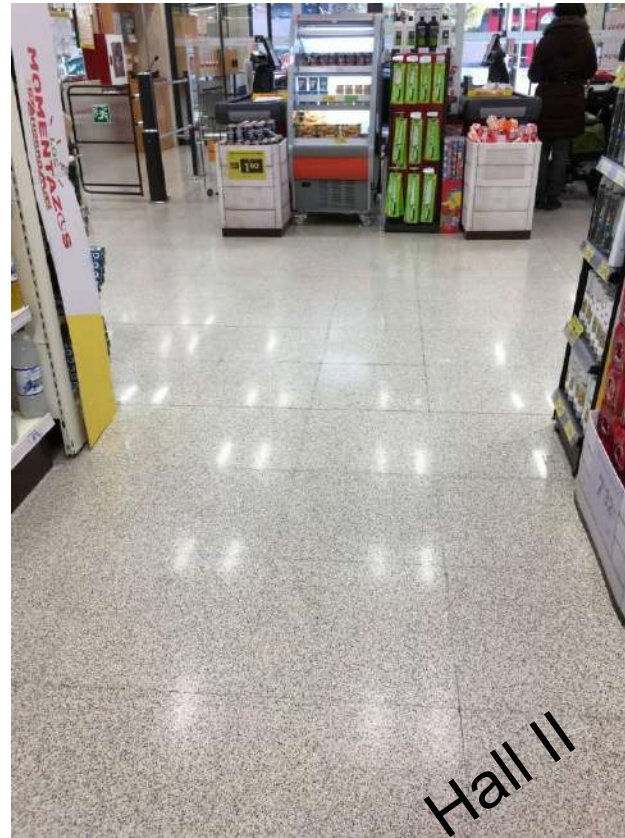
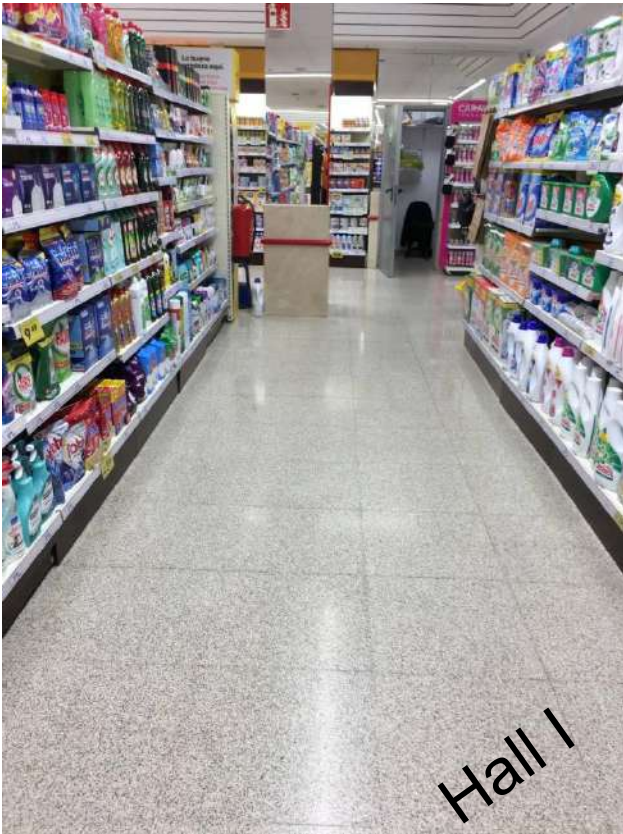


Remarks: 4-6 passes for the periodic restoration and polishing, for daily cleaning, 1 pass



Case Study

3. Granite Floor Daily Cleaning



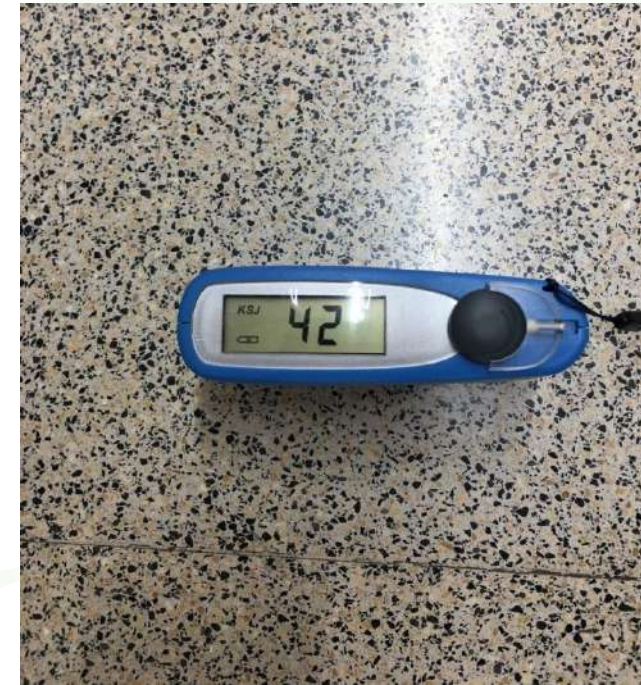
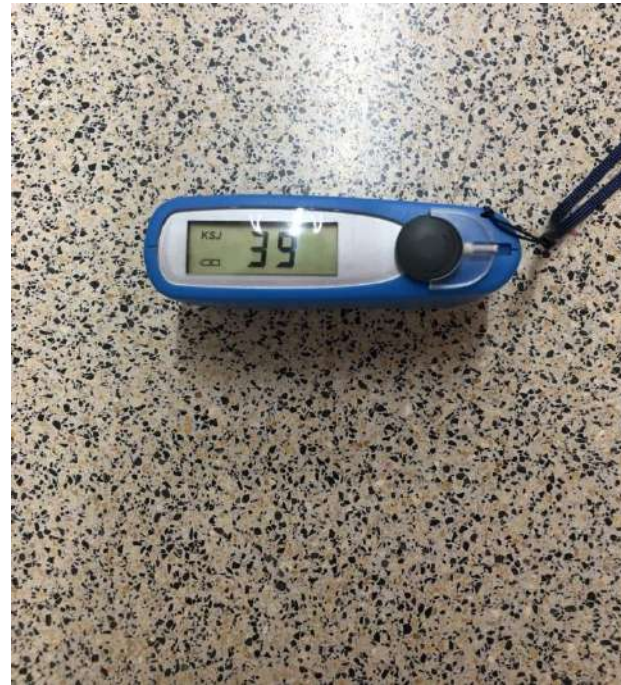
EZshine Daily Cleaning Test

Measurement at Hall I

1st Test : 2019-03-31

2nd Test :2019-04-04

3rd Test : 2019-04-08



No chemicals required, With water only, use Pink Pad on daily basis, then the gloss increase stably .

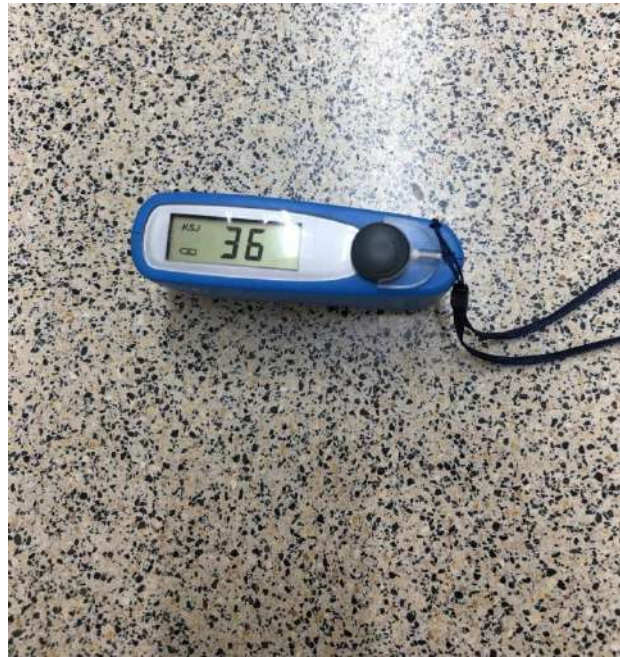
EZshine Daily Cleaning Test

Measurement at Hall II

1st Test : 2019-03-31



2nd Test :2019-04-04



3rd Test : 2019-04-08

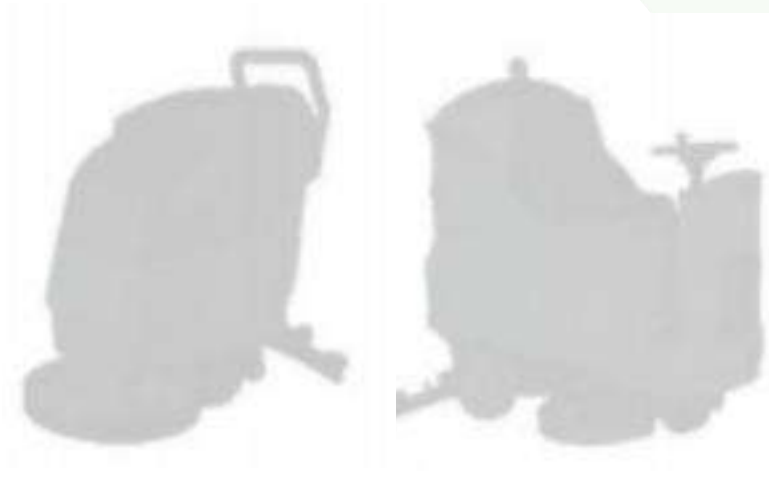


No chemicals required, With water only, use Pink Pad on daily basis, then the gloss increase stably .

How to make this result



**Pink Pad
XFine Step**



Water only

Part 3 For Resilient Floor

PVC- Linoleum - Rubber - Epoxy

Case Study

1. PVC Floor Stripping Case

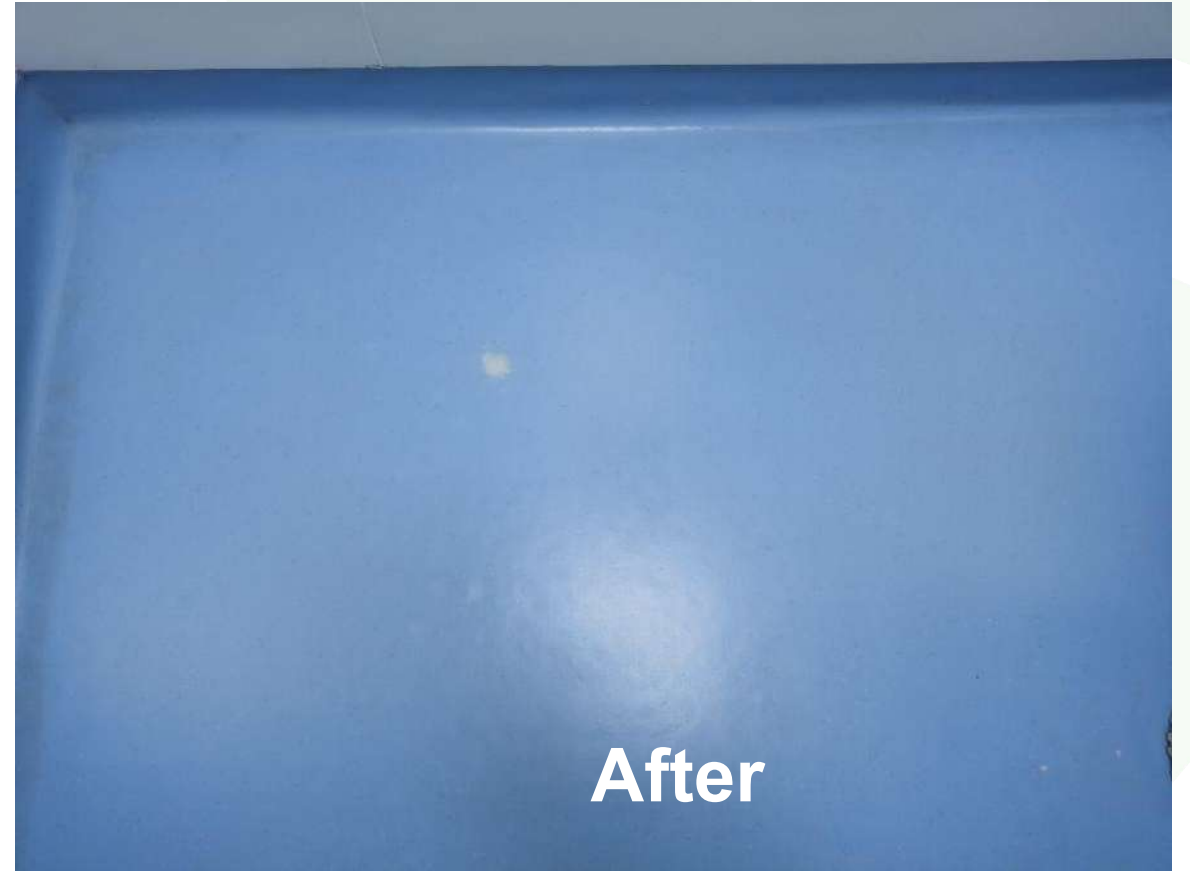


Case Study - PVC Stripping



Case Study -- Guangzhou Hospital

2. PVC Floor Stripping Case







How to make this result

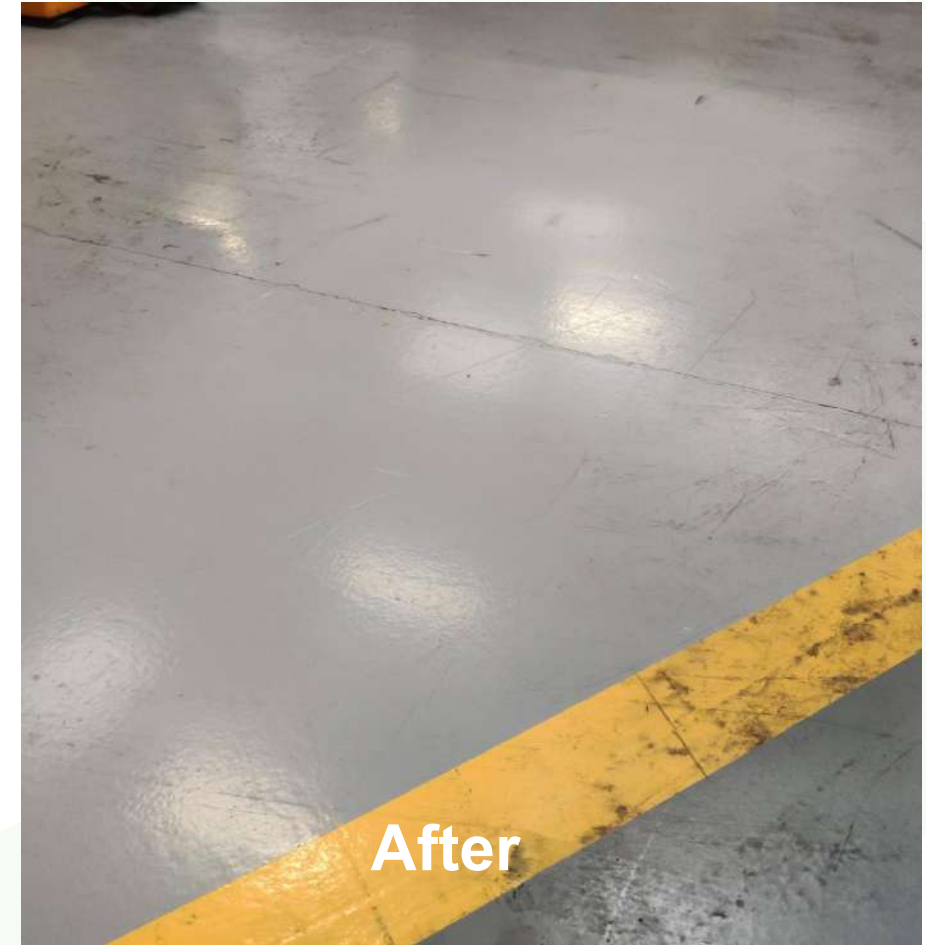


EZstrip Pad

Extreme Red

XCoarse Step

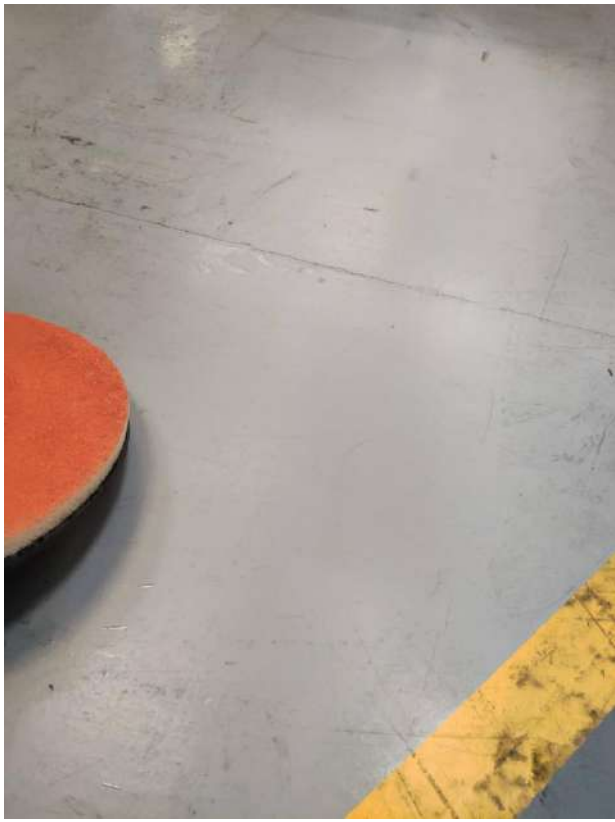
3. Epoxy Resin floor deep cleaning and maintenance



Case Study - Resilient Floor



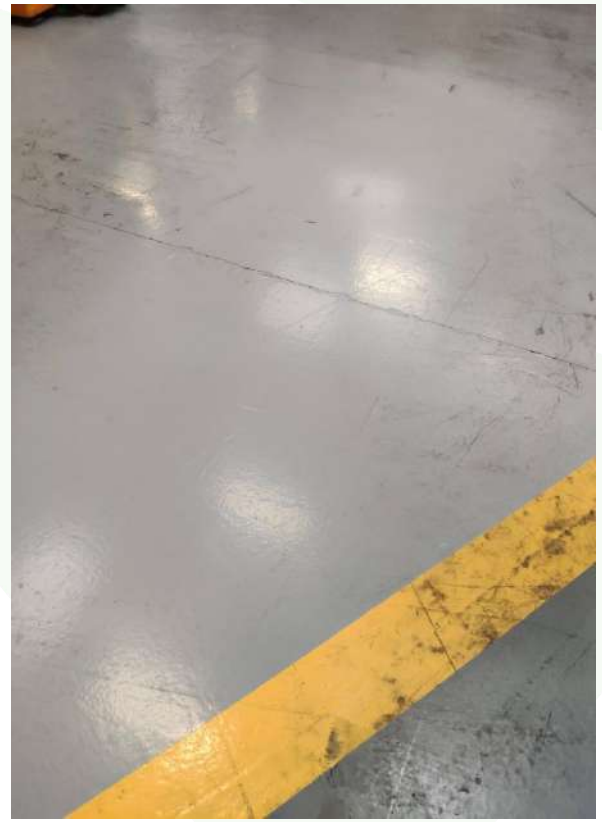
XRed



Orange

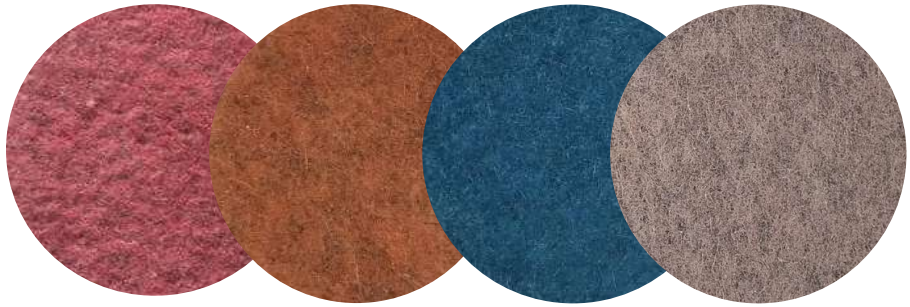


Blue



Pink

Case Study - Resilient Floor



**Xshine Pad
(XRed-Orange-Blue-Pink)**



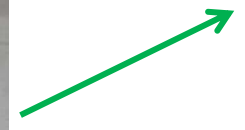
Water only

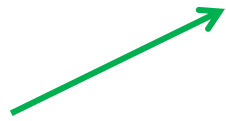
Case Study

4. PVC Floor Deep Cleaning



Before





Case Study - Resilient Floor

Deep cleaning Solution


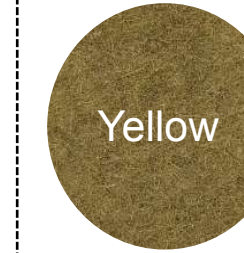
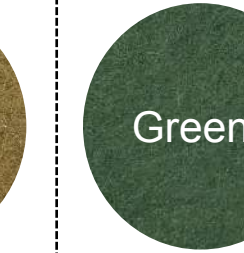


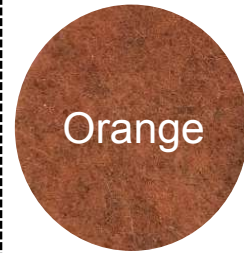



XRed Pad

Coarse Step

Water only

How to choose your right EZshine Polycrystal Pad?

| | | | | |
|--|--|--|---|---|
| |  Red |  White |  Yellow |  Green |
|  Extreme Red |  XRed |  Orange |  Blue |  Pink |
| XCoarse 0 | Coarse 1 | Medium 2 | Fine 3 | XFine 4 |
| Stripping Heavy-duty Cleaning | Deep Cleaning | Scrubbing | Polishing Maintenance | Daily Cleaning Polishing High-speed burnishing |

Maintenance Pad
Red-White-Yellow-Green
Standard-performance Series

EZstrip Pad - Extreme Red

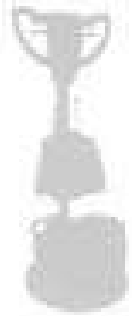


Xshine Pad
XRed-Orange-Blue-Pink
High-performance Series



How to choose the right machine?

**Stripping
Deep
cleaning
Polishing**



- **Single disc**
- **Orbital**
- **Oscillating machine**

**Wet use
6 passes**

**Daily
Cleaning**



- **Walk-behind**
- **Ride-on**

**Wet use
1-2 pass**

Burnishing



- **High-speed burnisher**

**Dry use with drops of water
(Avoid dust damage)
3 - 6 passes**